



## The Kazakh farmstead of the ethnographic settlement of Kozykosh<sup>1</sup>

\*M. Khabdulina<sup>a</sup>, S. Shnaider<sup>b</sup>, A. Yeginbay<sup>c</sup>, Z. Karimbayeva<sup>d</sup>

<sup>a</sup>L.N. Gumilyov Eurasian National University, Astana, Republic of Kazakhstan  
(E-mail: [mk\\_khabdulina@mail.ru](mailto:mk_khabdulina@mail.ru)). \*Corresponding author: [mk\\_khabdulina@mail.ru](mailto:mk_khabdulina@mail.ru)

<sup>b</sup>Institute of Archaeology and Ethnography SB RAS, Novosibirsk, Russian Federation  
(E-mail: [sveta.shnayder@gmail.com](mailto:sveta.shnayder@gmail.com))

<sup>c</sup>L.N. Gumilyov Eurasian National University, Astana, Republic of Kazakhstan  
(E-mail: [adil\\_eginbaev2000@mail.ru](mailto:adil_eginbaev2000@mail.ru))

<sup>d</sup>M.K. Ammosov North-Eastern Federal University, Yakutsk, Saha, Russian Federation  
(E-mail: [zulxumar63@gmail.com](mailto:zulxumar63@gmail.com))

### ARTICLE INFO

#### Keywords:

Saryarka, Kozykosh, Nura, excavations, settlement, dwelling, farmstead, kystau, turf bricks.

IRSTI 03.41.91

DOI: <http://doi.org/10.32523/2664-5157-2022-4-113-130>

### ABSTRACT

The issue of study of the settled culture of nomads in recent decades has been actively developed by various archaeological teams in Kazakhstan. This new field known as paleo-ethnographic got a scientific formalization in the 70s of the XX century. In 2021, excavation of the late-medieval settlement of Kozykosh of the late XIX – early XX centuries began in Akmola Ishim region.

The purpose of this article is to define the planning and compositional structure of the ethnographic settlement of the Kazakhs, to describe the housing and utility complexes, architecture, construction business based on the records of the excavated dwelling No.3, to demonstrate the changes of spatial layout and planning concept of the settlements due to the social and political changes of the early XX century in Kazakhstan.

The research materials are based on the archaeological excavations of the housing and utility complex of the farmstead No. 3 of the settlement of Kozykosh; the remote, geophysical, historical and ethnographic methods of study were used for the research. The significance of the excavations of the settlement of Kozykosh lies in the first large-scale experience of obtaining the materials, which confirm and describe the ethnographic information concerning the Kazakh wintering areas.

Received 14 September 2022. Revised 18 September 2022. Accepted 13 October 2022. Available online 30 December 2022.



#### For citation:

M. Khabdulina, S. Shnaider, A. Yeginbay, Z. Karimbayeva The Kazakh farmstead of the ethnographic settlement of Kozykosh // Turkic Studies Journal. – 2022. – Vol. 4. – №4. – P. 113-130. DOI: <http://doi.org/10.32523/2664-5157-2022-4-113-130>

<sup>1</sup> The article was prepared as part of the execution of the scientific project of grant funding of the Science Committee of the Ministry of Education and Science of the Republic of Kazakhstan ARO8857699 «Symbiosis of the nomadic and settled culture of the Kazakhs as a civilizational code of the steppe».

## Introduction

The notion of the «farmstead» is widespread in the Russian ethnography; it is used in architectural planning and has the meaning of «a complex of residential, household, park and other buildings that form the single economic and architectural unit» (Great Soviet Encyclopedia, 1958). The term was adopted in medieval archeology to describe any housing and utility complexes of medieval towns and settlements (Zilivinskaya, 2008; Savelyeva, 1994). According to the structural typology of the architectural ensembles of the cities of the Great Silk Road, the farm type of buildings of the shakhristans and rabads, the palatial farmsteads of the urban aristocracy are distinguished (Baipakov et al, 2001).

The term “farmstead” is suitable to describe the landscape structure of the Kazakh wintering areas (kystaus), including the constant dwellings, outbuildings, adjacent commercial lands, family cemeteries. Archaeological study of the Kazakh kystaus began in the 70s of the XX century. Due to the large-scale exploration routes around the South Kazakhstan, Betpakdala, Ulytau, hundreds of kystaus were discovered, small excavations were carried out, the typology was made, and the conclusions on location, topography, dimensions, layout of constant settlements and dwellings were made (Zholdasbayev, 1975). In archeology of Kazakhstan, a new paleo-ethnographic field has been formed to study the later-medieval urban and settlement culture (Zholdasbayev, 2017).

The Kazakh wintering areas in the steppe regions of Kazakhstan began to attract a special attention. Interest in them has increased due to the discovery and identification of historical, cultural, natural and landscape connections between the settlements of the early Iron Age and the Kazakh kystaus (Beisenov, 2019). A summary writing for the history of the Kazakh kystaus was published in the Historical and Cultural Atlas of the Kazakh people (2011: 103-132). It includes the chapter of wintering areas that identifies the principles of accommodation, criteria for choosing the places for wintering areas, dimensions, structure, number of households of one kystau; the correlation of all these parameters with the natural and geographical landscape is specified; information is given concerning the architecture and construction equipment of constant dwellings. In Kazakh ethnography, the most popular are kystaus consisting of 2-5 households.

In 2021, The Yessil archaeological expedition of the L.N. Gumilyov Eurasian National University has begun excavations of a large settlement of the late XIX- early XX century on the Kozykosh River.

Compared to traditionally small in area and in number of buildings of the Kazakh kystaus of the XV-XVIII centuries, the settlement of Kozykosh belongs to the type of the large constant settlement with a total area of 160 hectares. According to the architectural and planning development of the territory, about 80 separate housing and utility complexes are distinguished, which should be called as farmsteads in fact.

## Research methods

The methods of remote analysis, geophysical, computer modeling and traditional archeological methods such as excavations, typology of facilities and stratigraphic findings were used to research the monument.

The geophysical investigations gave information on spatial quality, mutual spatial arrangement, shape, layout, replanning of residential and household ensembles. The orthophoto map of monument was made. According to it, one can see that the cultural landscape is divided into two blocks, which differ in layout arrangement and prominent structure of residential and household buildings.

Besides the topography and internal planning of the settled area in a civilized manner, the orthophoto map of monument gives the information on the environment. The important part of the natural environment is the Kozykosh River. The rock terrace has a horizontal face of coasting and is a suitable area for settling. The orthophoto map of monument showed a blurry dam of bridge that existed in the XX century and was situated in the place of historic ferry crossing the Kozykosh River. According to the geophysical investigations, the territory of the Kazakh zirat adjacent to the settlement was included into the orthophoto map and the opportunity to survey its internal area from overhead was given.

In order to get information on layout, construction, chronology of residential buildings of two separate parts of the settlement and to make their comparative analysis, the excavations of five housing complexes were carried out in various places of the settlement of Kozykosh. To investigate them the traditional archeological methods were applied: description, typology, stratigraphic, filing, reconstruction. The archeological works gave a clue about cultural layers, architecture, structure and construction technology of dwellings. The finding of soft household, osteological materials help to define the timing of the excavated complexes.

## Materials

The settlement of Kozykosh is located on the southwestern outskirts of the city of Nur-Sultan, 4 km west of the village of Ilinka. Geographical coordinates of the monument are 51° 08' 30.77" north latitude, 071° 10' 18.82" east longitude. The demolitions of buildings stretch in a narrow ribbon 2.0 km long, 0.2-0.4 km wide along the surface of an elevated area of the rock terrace of the left shore of the Kozykosh River. The topography and allocation of facilities copy the meridional direction of the riverbed.

From the west, the Kazakh zirat adjoins the territory of the settlement. At present, the large sand quarry is located on the right shore in the area of the monument, which negatively affects the safety of the ethnographic settlement.

In 2021, the Yessil archaeological expedition of the L.N. Gumilyov Eurasian National University began excavations. The territory of the monument was filmed by quadcopter and the facilities of excavations were outlined in advance.

*The planning structure of the settlement* (Fig. 1). According to the examination of the monument using Googlemap, drone shooting and due to the elaboration of orthophoto map,

it revealed about 80 residential household farmsteads (Fig. 1). All residential structures are rectangular-shaped; their long axis is parallel to the riverbed. The dwellings are multi-sectioned, they are minimum 30 m long, and 16 m wide. Visually, two rows of rooms are shown in the relief of each house, sometimes modified by additional buildings.

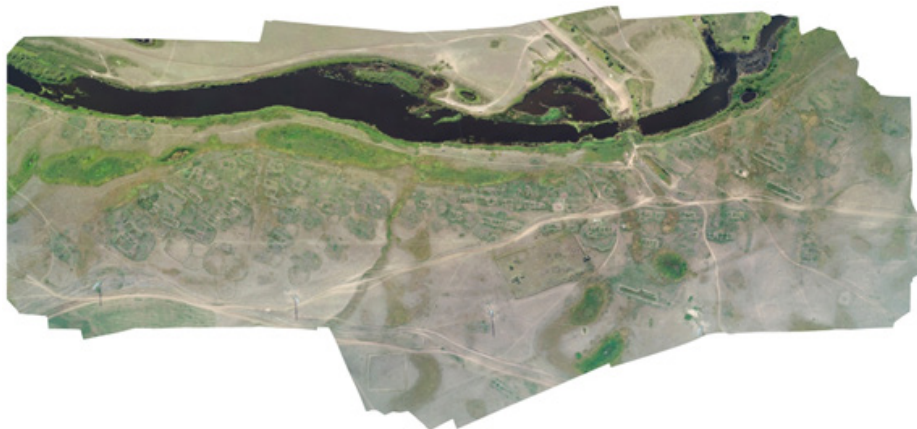


Figure 1. The settlement of Kozykosh. Orthophoto map. A – The northern planigraphic block.  
B – The southern planigraphic block

The spatial analysis divides the territory of the monument into two separate blocks (the northern and the southern). Each zone has a compositional independence. Their origin is caused by a chronological sequence, because the architectural composition of the blocks differs in the internal layout, density and composition of housing and utility complexes. The structural blocks are separated by the across-the-grain boundaries represented in the relief of the terrace.

A vivid boundary line is the brook cutting the territory of the monument in cross direction. The brook puts bounds to the northern densely built-up structural part of the monument from the south. This brook is a natural spring creek that functions during the flood. According to the spatial allocation of housing complexes, it has existed for more than one hundred years. At least, during the period of habitation of the terrace surface it had already existed. This part of the shore terrace is bounded in relief by the deep *sai* from the south and by the elbow driver bend from the north. As a result, a space-saving plateau more than 1 km long was formed.

On its surface, each farmstead is accompanied by large areas of various shapes fenced with moat and rampart (Fig. 2). It is impossible to find any planning system during the examination on foot. The closer to the river, the smaller their area, they often overlap the moat and rampart of neighboring ensembles. The farther from the river, the more loose and rare their allocation. They have the clear oval, square and rectangular outlines. Many of them overlap each other determining the chronological stratigraphy. These fenced areas belong to the household structures and are certainly adjacent to the dwellings on one side. The fenced areas including residential and utility buildings are a characteristic feature of the Kazakh *kystaus* (Glukhov, 1927).

The ruined remains of dwellings designed in two rows and separated by a street 10-20 m wide represent the southern half of the territory of the site. Each row contains 10-12 farmsteads. They have a strictly rectangular shape, in the configuration of which the utility rooms are included, adjoining, as a rule, to the side edges. Such a planning layout is typical for rural settlements of the state farm period. From the west, the territory of the Kazakh ziratad joins the street layout (Fig. 1).



Figure 2. The settlement of Kozykosh. The northern block. Drone survey

The differences in topography and planigraphic structure led to the selection of five farmsteads in different parts of the settlement of Kozykosh for excavations. Two farmsteads different in area and height of wall breakdowns were investigated in the southern part of the monument, and three farmsteads- in the northern densely built-up block (Fig. 1). A total of 900 sq.m was excavated. This article presents the materials of the excavations of dwelling No. 3 of Kozykosh. The volume of the obtained material allows us to offer historical and cultural reconstructions of many aspects of study of the Kazakh Kystaus.

The dwelling No. 3 is located in the northern densely built-up part of the settlement, situated 100 m north of the brook that divides the territory of the monument into two structural and planigraphic blocks (Fig. 1).

The dwelling No. 3 was chosen for excavations as it stands somewhat autonomously, it has a well-defined trench-like fence, which suggests the possibility of exploring the farmstead with the additional buildings. Any housing structures in the form of wall outlines of houses are not presented in the relief. This has served as an assumption that the farmstead might be older than other complexes with a clear relief of the breakdown of walls.

The actual surface shows only the moat outlines clearly appearing. The trench is round-pentangular in shape, 42-43 m in diameter, and 2 m wide. The eastern side of the moat is 26 m long, and straightened. The structures of the dwelling No. 3 are adjacent to it in particular. The inner area is flat, slightly turfed. On the northern side, the moat has a passage 4 m wide.

From the southwestern corner of the trench, a smaller trench 0.8 m wide extends to the east. It surrounds an elevated area adjacent to the wall of the trench from the west. According to the actual surface, its outlines stretch 16 m towards the river and then disappear. A gap 2.5 m wide is fixed in the southwestern corner.

To clarify the constructions, it was decided to cut the elevation across and to include the trench outlines. Therefore, originally, the excavation was planned along the NW-SE line with a grid of squares 3x3 m, 6 m wide, and 12 m long (Fig. 3).

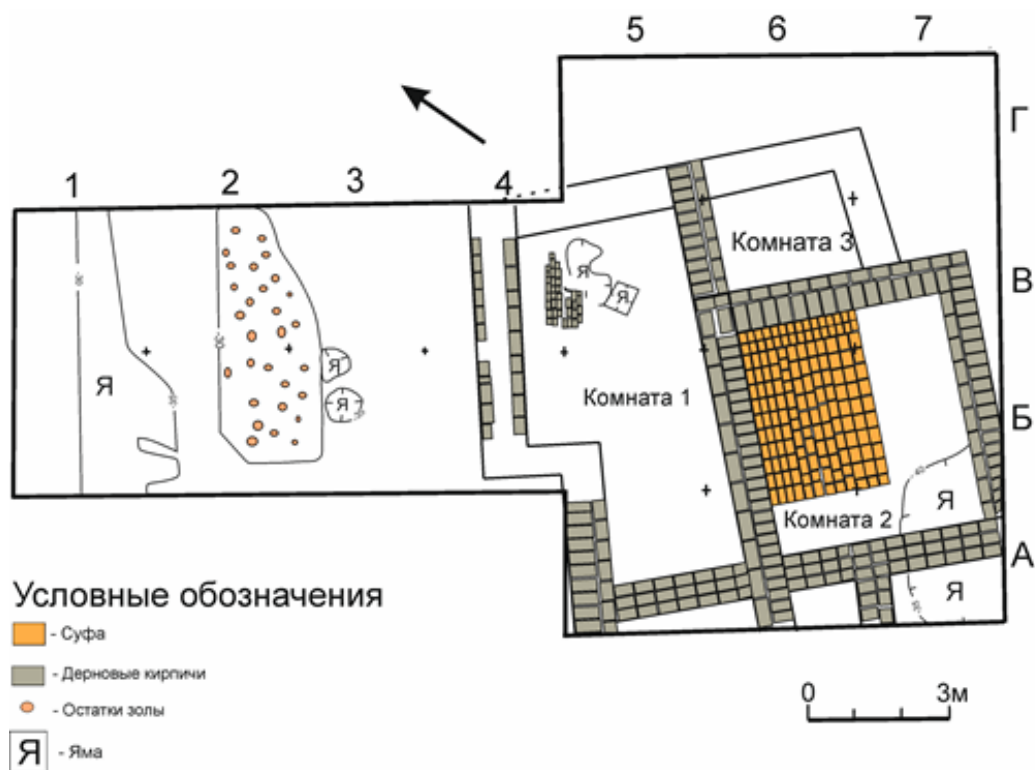


Figure 3. The settlement of Kozykosh. Farmstead No. 3. The excavation plan

As the contours of the brick walls appeared, the excavation began to expand in all directions, except for the northwestern one, where the trench was located. As a result, the area of 180 sq.m was excavated. To record the building structures and findings, the squares marking was made: alphabetically along the latitudinal line and numbers along the meridional line (Fig. 4).

*The moat.* Its outlines in the shape of deepening and mound are recorded on the actual surface. The trench diverter was arranged on the inner surface of the fenced territory and formed the mound. The trench was divided into squares (1/B, C). The surface bending above the trench has a depth of 20 cm. The smaller mound hump rises to the floor western side. It consists of the clay diverter 20-30 cm thick. The clay covers the humus, compactly arranged with the 0.7 m wide roller. According to the plan, the outlines of the trench are 0.8-1.2 m wide, 0.6 m deep, and the bottom is flat (Fig. 4).

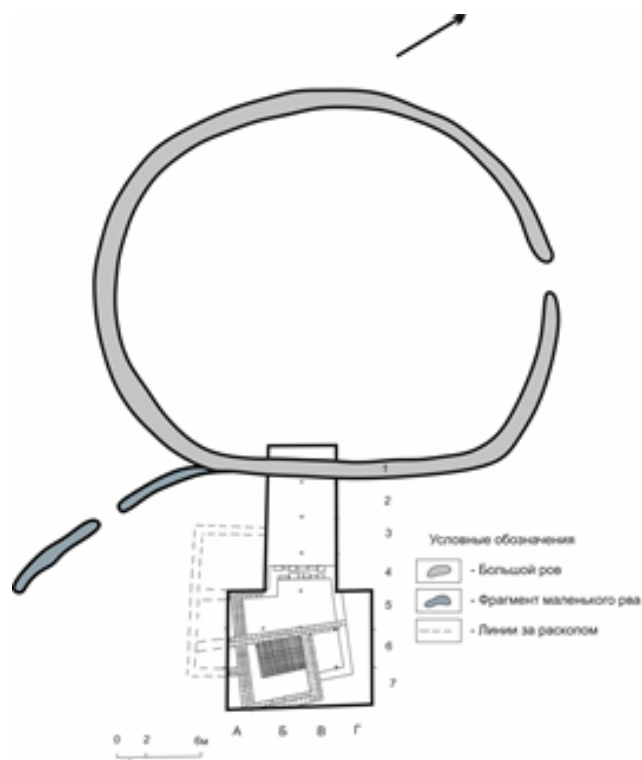


Figure 4. The settlement of Kozykosh. Topographic plan of the farmstead No. 3

*The planning.* An excavation with the area of 180 square meters discovered a three-chamber dwelling, some outbuildings adjacent to the walls of the dwelling were recorded. Our observations of the stratigraphy and structure of the profiles have helped us to see some reliefs outside the excavation. Thanks to the brick walls extending outside the excavation area and due to the examination of the actual surface around the excavation site on the southwestern side, the rectangular rooms were found. The contours of their walls are visible due to the relief rollers shown on the actual surface. A rectangular room with dimensions of 6x5 m is adjacent to the squares 3-4/B from the south. The contours of its walls shaped as the smooth rollers are visible on the actual surface. The same rectangles are adjacent to the squares 5-6/A from the south. These rooms have not been excavated, their purpose remains unknown (Fig. 3).

The layout of the three-chamber dwelling was seen according to the turfy and mud bricks of the walls (Fig. 4). The dwelling is of a square-like shape with dimensions of 10x9 m. The dwelling consists of three different-sized rooms. Room 1 is rectangular, stretched along the NE-SW line, the internal dimensions are 7.7x2.6 m. It has a ledge-niche 1.5 m wide on the north-western side, 4.40 m long. Two other rooms are adjacent to its southern long wall. The northeastern dwelling is small one and designated as the dwelling No. 3, and the main living room is almost square according to the plan (No. 2).

The room No. 1 is presumably for household and kitchen purposes (Fig. 4). A niche of the northwestern wall of the room No. 1 is 1.5 m wide, it is indicated by turning the segment of the wall to the north and is specified in the plan and on the profile of the square 5B (Fig. 3). The inner space of the room 1 has the area of 21.5 square meters. The bricks of the northern, western and southern long walls were cleared. The walls 0.7 - 1.0 m wide are lined in three rows of the turfy bricks. Two external rows are laid longitudinally, the inner space between them is fragmentarily filled with bricks, covered with gray soil here and there. The corners of the house are carefully stabilized with the built bricks.

Within the squares 4-5/B the fragments of causeway made of the small amorphous-shaped bricks were cleared on the floor of the room No. 1. They are of different composition: dark gray, smooth, yellow clay. These small bricks stretch all over the square to the south edge. They are square-like, 15x15 in size; 20x20 cm. They are found in the section of the eastern profile in the shape of the thin layer. On the surface of the squares 4-5/B, their layout resembles a modern tiled floor (Fig. 4).

Among three chambers of the dwelling, the room 2 is the main one. It is almost square-shaped (6 x 5.5 m), it has well-preserved walls, the total area is 33 sq.m, the internal area is 20 sq.m. The north-western corner of the room 2 is allocated for a clay sufa with dimensions of 3.2 x 2.3 m. The upper level of the sufa bricks was recorded at a depth of 20 cm. According to the profiles, another layer above the actual one used to exist. However, it had been destroyed by time. The sufa bricks are square-shaped 18 x 18; 20 x 20 cm made of the gray soil and yellow clay. The surface of the sufa bricks is smooth, as if smoothed and covered with the facing plaster. The bricks are laid in two layers on a humus ballast. There are the calcination spots on the surface of the sufa under the northern and western walls of the room. Perhaps it is a fireplace or a portable fireplace (sandalwood). The top row of bricks in the profile starts from the top of the excavation.

The northern and southern walls 0.75 m wide of the room 2 are lined in three rows of the large bricks. The inner row is poorly traced, the bricks are visible here in fragments. Sometimes there is a backfilling with gray soil, clay, brushwood instead of the bricks.

There is a large hole in the southern corner of the room 2. Its outlines were found at the depth of 35 cm. According to the stratigraphy of the structures, it can be seen that the hole had been dug out before the dwelling was built. It was covered with the lumpy soil, the brick walls of the dwelling were built on its surface. The hole extends outside the territory of the dwelling and the excavation site as a whole (Fig. 4). A narrow row of brick lining extends from the southwestern corner outside the excavation area. Perhaps from the construction of the entrance.

### Analysis

*Degree of study.* The history of the dwelling has a considerable bibliography including the ethnographic descriptions, archaeological sources. A wide range of ethnographic data on the Kazakh kystaus, land use and nomadic movements is contained in the writings of the



statistical expeditions of the Russian officials of the XIX century, the service class people and representatives of the tsarist administration who tried to assess the possibilities of use of the Kazakh lands. Interest in new lands, life and culture of the Asian peoples gave rise to many sketches, descriptions, scientific publications about the natural conditions, climate and economic specifics of the Kazakhs (Shne, 1894; Rakhimov, 2012: 141-149).

Description of dwellings and close attention to the construction traditions of the Kazakhs of the XIX – early XX centuries began with colonization of the territory of Kazakhstan. The Russian ethnographers-travelers found the population of the Kazakh steppes already in the latter days of the traditional pattern of household: nomadic cattle breeding, loss of pastures, forced haying and farming. The tsarist officials-statistics specialists paid attention to the size of auls, number of houses, number of families, layout, building materials (Krasovskiy, 1868). The similar comparative materials were collected in many regions (Review of Akmolinskaya, 1899). All ethnographic descriptions emphasize the main feature of the layout of the Kazakh kystaus – a close correlation between the living accommodation and the barnyard (Glukhov, 1927; Shne, 1894), explaining this with the fact that the main concern and wealth of nomads was the cattle.

The studies of the beginning of the XX century considered the history of the origin and evolution of dwellings of various types, layout of the farmstead, dependence of architecture, interior design on the natural conditions and availability of building materials and level of economic development (Кумеков, Ибраев, 2020: 97-99).

In recent decades, after the discovery of the settlements of the Early Iron Age (Khabdulina, 2019) and the identification of their similarity in many features with the wintering areas of new time, the study of topography, planning structures, reconstruction of architecture, area, methods of wall construction, calculations of the roof of the Kazakh kystaus began (Beisenov, 2019; Bukesheva, 2021). The first excavations in Saryarka were carried out in 2018 in the settlement of new time called Sarkyram (Dukombaiyev, 2020: 136). The settlement consisted of four dwellings, and according to the excavations, it was classified as a seasonal dwelling of kuzeu. The materials on raw architecture, construction business of the Kazakhs of the end of the XIX century were obtained. The writings of 2021 area continuation of this subject.

**The important aspect of study of the Kazakh kystaus** is a *construction technology*. General information is known according to the ethnographic descriptions of the XIX – early XX centuries. Archaeological excavations help to specify them.

By now, the amount of collected records allows us to classify two chronological periods of the constant monuments of the later-medieval era: monuments of the period of the Kazakh Khanate of the XV-XVIII centuries, and ethnographic time of the XIX-XX centuries. Any settlements of the period of the Kazakh Khanate of the steppe Saryarka are still unknown. In 2021 excavations of a large settlement of the late XIX- early XX century on the Kozykosh River were started

The settlement of Kozykosh is a new kind of the medieval settlement unit of the North Saryarka. The monument has the intense planigraphic structure. According to the artefactual remains, visual analysis of buildings' relief, it was found that the settlement was new one of that time.

The settlement of Kozykosh is located on the left shore of the Kozykosh River and feeder of the Ishim River. The Kozykosh River united the waters of Nura and Ishim. At present, it consists of the separate stretches, the dead arms, the river bed floods only during the spring tide. The flow of the Kozykosh River accepts several feeders. The river itself fancily and frequently meanders in the area of 40 km between Ishim and Nura creating the suitable elevated areas. At the mouth of Ishim the river, meandering, creates a complex mosaic chain of over dried and new river beds. The width of the river bed is maximum 100-120 m.

The facilities on the Kozykosh River were first discovered in 2006 by the exploratory team of the Yessil stationary archaeological expedition. Over the subsequent years, the monitoring of the monument surface had been carried out from time to time. Thanks to the examination of the monument on Google maps and on foot, its dimensions, planning density and scale of the settlement facility were revealed. It had been established that it was the largest ethnographic settlement in the region. As part of one large monument containing more than eighty housing and utility complexes, two stages of development and transformation of a constant Kazakh dwelling are found.

A fractional grid of squares with dimensions of 3 x 3 m, some careful field observations, a recording of stratigraphy on the drawings and the detailed photographic recording of the entire course of excavations allowed us to identify many details of the Kazakh housebuilding and compared them with the ethnographic materials. Any troubles in reconstruction were caused by the low thickness of the cultural layer, the homogeneous soil construction material without the wood, stones, and burnt bricks. In the excavation site of the farmstead No. 3, there are no pillar holes, any additional grooves and explanatory structural features. We have only a plan and profiles 30-40 cm high. It represents a residual of building structures. What existed above was taken away by time.

The dwelling No. 3 was chosen for excavations as it stands somewhat autonomously, it has a well-defined trench-like fence, which suggests the possibility of exploring the farmstead with the additional buildings. Any housing structures in the form of wall outlines of houses are not presented in the relief. This has served as an assumption that the farmstead might be older than other complexes with a clear relief of the breakdown of walls.

A plenty of profiles illustrate the following construction techniques. They are best seen according to the internal stratigraphy of the room No. 2. The area of the room is lowered to a depth of 40 cm from the actual surface. It defines a continent level. The entire surface is laid with the turfy layers 20 cm thick. This humus layer is seen on all profiles (Fig. 5). Perhaps the cut turfy layers were fixed together like bricks, otherwise they would tear apart. An interesting thing: a thin line of gray and sometimes yellow soil like adhesive solution covers the bottom and the top of the turfy layer. It is said, that for better adhesion, the turf was laid with the grass down and then after some time passed and some soil chemical processes such a thin light layer appeared (Glukhov, 1927:113; Vostrov, Zakharova, 1989:49). As for the top layer, it is the result of laying the next layer of bricks coated with a specially prepared solution.



Fig.5. The settlement of Kozykosh, the dwelling No.3. The square 7C. Bricks of the walls

The width of the walls of the room No. 2 is 0.75 m. The bricks are predominantly turf; some of them are mixed with the clay, lined in three rows. The external row is laid crosswise, the inner row is lengthwise. There are a clay layer, a loose gray soil and some fragments of bricks between the brick rows. Then northern and western walls have also brick inner rows. The brick sizes differ: 35x35; 45x30 cm. The very large bricks (70x30 cm) were used for construction of the external walls of the dwelling: northern, eastern and southern. Each brick is plastered, smoothed on four sides as it can be seen according to the seams. Sometimes the seams are covered not only with the soil, but also with the chopped brushwood, lumps of rotten wood and clay.

Three layers of bricklining can be seen according to the profiles. Each one is 10-15 cm thick. This is clearly seen according to the stratigraphy of the brick lining of the sufa (square 6/C).

*The household buildings.* According to the excavations of the dwelling 3 of the settlement of Kozykosh, some household buildings represented by the traces of brick walls, the layers of brown layer with bends on the continent were recorded in the squares between the moat and the western wall of the dwelling. This lumpy and as if compressed layer which can be easily dug has a rotten structure. The surface of this layer is covered with the gray ashy soil in the squares 2/C,B. All this testifies to the existence of a household building here. The household buildings also include the rectangular rooms along the southern side of the excavation site emerged by the wall rollers. Along the northern wall of the dwelling, there is a narrow room of 3 m width (square 4-6/G). Its outlines appear on the layers of bricks recorded in the profiles. Thus, the cattle barns surrounded the residential part from the west, north and south. Only the eastern side, facing the river, was free from any buildings.

Another detail is the indication that the entrance to the dwelling led through the barnyard. Possibly it was from the south (square 6/A). Here there is a branch from the wall of the

room No. 2, which goes outside the excavation site. In the corner of the square, there is a cluster of kitchen bones. No roof structures were found. According to the ethnographic materials, it can be assumed that it was flat or with a small slope. The height of the dwelling could be at least 2 m.

## **Results**

The significance of excavations of the settlement of Kozykosh lies in the first large-scale experience of obtaining the materials to confirm and specify the ethnographic descriptions of the Kazakh wintering areas. Compared to traditionally small in area and in number of buildings of the Kazakh kystaus of the XV-XVIII centuries, the settlement of Kozykosh belongs to the type of the large constant settlement with a total area of 160 hectares.

As part of one large monument containing more than 80 housing and utility complexes, two chronological stages of development and transformation of constant Kazakh dwelling are distinguished. The results of our excavations relate to many aspects of household activity, the specifics of historically established patterns of the Kazakh management of natural resources. Houses were built of mud and turf bricks. The layout and interior of the dwellings continue the traditions of medieval cities. The main component of the Kazakh wintering grounds are outbuildings. They surrounded the residential part of the farmstead.

The important result is the timing of two stages in the history of the settlement of Kozykosh: the second half of the XIX century; the first decades of the XX century. The scientific publications provide the opinion that the settlement and construction of constant dwellings of the Kazakhs would have become widespread by the 40s of the XIX century (Azhigali, 2004: 68; Beisenov, 2019:30) and kystaus as a historical archetype disappeared in the middle of the XX century (Beisenbaikyzy, 2017). Archaeological and ethnographic materials of study of the settlement of Kozykosh completely confirm this point.

## **Conclusion**

Since the XIX century, some theoretical approaches have been developed in studying of the history of dwelling as an important element of material culture, as an ethnic indicator and the transformation of its historical types. In relation to the nomadic world, they are based on the factors of changes of household patterns. A possibility approach explains the independence of nomadic way of life from natural and climatic conditions, and that calls for development of agriculture as the best alternative to nomadism. Its direct opposite is a geo-deterministic one indicating the extreme dependence on the natural and climatic conditions, the impossibility and harmfulness of transition of nomads to a settled way of life. Historically, the evolutionary approach is traditional, referring a gradual natural transition to a settled way of life.

The settlement of Kozykosh is a special type of settlement that arose in the era of cardinal historical and political changes. The changes were caused by the colonization of the Kazakh territory in the XIX century and the transition to settlement in the early XX century. Archaeological and ethnographic materials of study of the settlement of Kozykosh completely confirm this point.

## Reference

- Ажигали С.Е., 2004. Эпоха культурно-исторического перелома в казахской степи: середина XIX в. // Труды Центрального музея. Т.1. Алматы: Ғылым. С. 67-71.
- Байпаков К.М., Шарденова З.Ж., Перегудова С.Я., 2001. Раннесредневековая архитектура Семиречья и Южного Казахстана на Великом Шелковом пути. Алматы: Ғылым. 238 с.
- Бейсенбайқызы Бибігүл, 2017. Қазақтың қыстаулары. Көкшетау: Әрекет. 220 с.
- Бейсенов А.З., 2019. К.А. Акишев и вопросы изучения памятников казахского времени. Марғұлан оқулары–2019: Көрнекті қазақстандық археолог К.А. Ақышевтың 95 жылдығына арналған халықаралық ғылыми-тәжірибелік конф.материалдары. Нұр-Сұлтан. Б. 10-38.
- БСЭ, 1958. М.: Большая сов. энциклопедия. Т. 51. 651 с.
- Букешева Г.К., 2021. Исследование зимовок усадебного типа комплекса Кызыл-Мешит Тенгиз-Коргалжынского региона// European Scientific Conference: сборник статей XXVI международной научно-практической конференции. Пенза: Наука и Просвещение. С. 101-106.
- Востров В., Захарова И., 1989. Казахское народное жилище. Алма-Ата: Наука КазССР. 181 с.
- Глухов А., 1927. Зимнее жилище актюбинских и адаевских казахов. Материалы комиссии экспедиционных исследований. Ленинград: АН СССР. Вып.2. С. 108-134.
- Дукомбаев А.Т., 2020. Раскопки казахского поселения Саркырама //Сакральный ландшафт Сарыарки. Нур-Султан: ЕНУ. С. 136-158.
- Жолдасбаев С., 1975. Материальная культура казахов XV-XVII в.: автореферат диссертации на соискание ученой степени кандидата исторических наук. Алма-Ата. 43 с.
- Жолдасбаев С., 2017. Қазақ елінің XV-XVIII ғасырлардағы тұрақты мекен-жайлары. Астана: Қазақ ғылыми-зерттеу мәдениет институты. 304 с.
- Зиливинская Э., 2008. Усадьбы золотоордынских городов. Астрахань: Изд-ий дом «Астраханский университет». 172 с.
- Историко-культурный атлас казахского народа. 2011. Алматы: Print-S. 300 с.
- Красовский Н.И., 1868. Область сибирских киргизов: [Статистическое описание]. Часть 3. Санкт-Петербург: Тип. Траншеля, Ретгера и Шнейдера. 282 с.
- Кумеков Б., Ибраев Ш., 2020. Ценный вклад в этнологическое казаховедение// Turkic Studies Journal. №1,Том 2. С. 93-104.
- Обзор Акмолинской области за 1898 год, 1899. Омск: Тип. Акмолин. обл. правления. 130 с.
- Рахимов Е.К., 2012. Казахские зимовки-кыстау XIX в. (по письменным источникам)// Материалы 1-го и 2-го симпозиумов по казахскому памятниковедению. Алматы–Атырау: «Агатай». С. 141-149.
- Савельева Т.В., 1994. Оседлая культура северных склонов Заилийского Алатау в VIII-XIII вв. Алматы: Ғылым. 215 с.
- Хабдулина М.К., 2019. Новое в изучении тасмолинской археологической культуры Сарыарки// Turkic Studies Journal. № 2, Т. 1. С. 21-33.
- Шнэ В., 1894. Зимовка и другие постоянные сооружения кочевников Акмолинской области. Записки Западно-Сибирского отделения РГО. Кн. 17. Вып.1. С. 21-44.

## Reference

- Azhigali S.E., 2004. Epokha kul'turno-istoricheskogo pereloma v kazakhskoy stepi: seredina XIX v. [The era of cultural and historical turning point in the Kazakh steppe: the middle of the XIX century]. Trudy Tsentral'nogo muzeya. Vol. 1. Almaty: Ğylym. P. 67-71. [in Russian].
- Baypakov K.M., Shardenova Z.Zh., Peregudova S.Ya., 2001. Rannesrednevekovaya arkhitektura Semirech'ya i Yuzhnogo Kazakhstana na Velikom Shelkovom puti [Early medieval architecture of Semirechye and South Kazakhstan on the Great Silk Road]. Almaty: Ğylym. 238 p. [in Russian].
- Beysenbayqyzy B., 2017. Qazaqtın qıstawları [Kazakh wintering]. Kokshetau: «Äreket». 220 p. [in Kazakh].
- Beysenov A.Z., 2019. K.A. Akishev i voprosy izucheniya pamyatnikov kazakhskogo vremeni [Akishev and questions of studying the monuments of the Kazakh time]. Margulanovskiye chteniya – 2019: Proceedings of the international scientific and practical conference dedicated to the 95th anniversary of the outstanding Kazakh archaeologist K.A. Akishev. Nur-Sultan. P. 10–38. [in Russian].
- BSE., 1958. Moscow: Bol'shaya sovetskaya Entsiklopediya [Great Soviet Encyclopedia]. V. 51. 651 p. [in Russian].
- Bukesheva G.K., 2021. Issledovaniye zimovok usadbnogo tipa kompleksa Kyzyl-Meshit Tengiz-Korgalzhynskogo regiona [Study of homestead-type wintering areas of the Kyzyl-Meshit complex of the Tengiz-Korgalzhyn region]. European Scientific Conference: collection of articles of the XXVI International Scientific and Practical Conference. Penza: Nauka i Prosveshcheniye. P. 101-106. [in Russian].
- Vostrov V., Zakharova I., 1989. Kazakhskoye narodnoye zhilishche [Kazakh folk dwelling]. Alma-Ata: Nauka KazSSR. 181 p. [in Russian].
- Glukhov A., 1927. Zimneye zhilishche aktyubinskikh i adayevskikh kazakhov [Winter dwelling of the Aktobe and adai Kazakhs]. Materialy komissii ekspeditsionnykh issledovaniy. Leningrad: AN SSSR. Issue. 2. P. 108-134. [in Russian].
- Dukombaev A.T., 2020. Raskopki kazakhskogo poseleniya Sarkyrama [Excavations of the Kazakh settlement Sarkyrama]. Sakral'nyy landshaft Saryarki: Nur-Sultan: ENU. P. 136-158. [in Russian].
- Zholdasbayev S., 1975. Material'naya kul'tura kazakhov XV-XVII v. [Material culture of the Kazakhs in the XV-XVII centuries]. Abstract of the dissertation of the candidate of Historical Sciences. Alma-Ata. 43 p. [in Russian].
- Zholdasbaev S., 2017. Qazaq eliniñ XV-XVIII ğasırlardağı turaqtı meken-jayları [Permanent settlements of the Kazakh country in the XV-XVIII centuries]. Astana: Kazakh Research and Culture Institute. 304 p. [in Kazakh].
- Zilivinskaya E., 2008. Usad'by zolotoordynskikh gorodov [Estates of the Golden Horde cities]. Astrakhan: «Astrakhanskiy universitet» Publishing House. 172 p. [in Russian].
- Istoriko-kul'turnyy atlas kazakhskogo naroda, 2011. [Historical and cultural atlas of the Kazakh people.]. Almaty: Print-S . 300 p. [in Russian].
- Krasovskiy N.I., 1868. Oblast' sibirskikh kirgizov: [Statisticheskoye opisaniye] [The Siberian Kyrgyz region: [Statistical description]]. Part 3. St. Petersburg: printing house Transhelya, Retgera i Shneydera. 282 p. [in Russian].
- Kumekov B., Ibrayev Sh., 2020. Tsennyy vklad v etnologicheskoye kazakhovedeniye [Valuable contribution to ethnological Kazakh studies]. Turkic Studies Journal. №1. Vol. 2. P. 93-104. [in Russian].
- Obzor Akmolinskoy oblasti za 1898 god, 1899. [Overview of the Akmola region for 1898]. Omsk: Printing house of the Akmola regional government. 130 p. [in Russian].

Rakhimov E.K., 2012. Kazakhskiye zimovki-kustau XIX v. (po pis'mennym istochnikam) [Kazakh wintering-kustau XIX century (according to written sources)]. Materials of the 1st and 2nd Symposia on Kazakh Monuments. Almaty-Atyrau: Agata. P. 141-149. [in Russian].

Savelyeva T.V., 1994. Osedlaya kul'tura severnykh sklonov Zailiyskogo Alatau v VIII-XIII vv. [Settled culture of the northern slopes of the Trans-Ili Alatau in the VIII-XIII centuries]. Almaty: Gylym. 215 p. [in Russian].

Khabdulina M.K., 2019. Novoye v izuchenii tasmolinskoy arkheologicheskoy kul'tury Saryarki [New in the study of the Tasmolin archaeological culture of Saryarka]. Turkic Studies Journal. Number 2, Vol. 1. P. 21-33. [in Russian].

Shne V., 1894. Zimovka i drugiye postoyannyye sooruzheniya kochevnikov Akmolinskoy oblasti [Wintering and other permanent structures of the nomads of the Akmola region]. Zapiski Zapadno-Sibirskogo otdeleniya RGO. B. 17. Issue 1. P. 21-44. [in Russian].

**\*М. Хабдулина**

*Л.Н. Гумилев атындағы ЕҰУ, Нұр-Сұлтан, Қазақстан Республикасы*  
(E-mail: mk\_khabdulina@mail.ru)

*\*Байланыс үшін автор: mk\_khabdulina@mail.ru*

**С. Шнайдер**

*РФА СБ Археология және этнография институты, Новосибирск, Ресей Федерациясы*  
(E-mail: sveta.shnayder@gmail.com)

**А. Егинбай**

*Л.Н. Гумилев атындағы ЕҰУ, Нұр-Сұлтан, Қазақстан Республикасы*  
(E-mail: adil\_eginbaev2000@mail.ru)

**З. Каримбаева**

*М.К. Аммосов атындағы Солтүстік-Шығыс федералдық университеті, Якутск, Саха, Ресей Федерациясы*  
(E-mail: zulxumar63@gmail.com)

**Қозыкөш этнографиялық қонысының қазақ үй-жайы**

**Аннотация.** Көшпенділердің отырықшы мәдениетін зерттеу мәселесін соңғы онжылдықтарда Қазақстанның түрлі археологиялық ұжымдары белсенді түрде дамытып келеді. Палеоэтнографиялық деп аталатын бұл жаңа бағыт ХХ ғасырдың 70-ші жылдарында ғылыми сипатқа ие болды. Қазіргі уақытта жинақталған материалдың көлемі кейінгі орта ғасырлардағы стационарлық ескерткіштерді екі хронологиялық кезеңге бөлуге мүмкіндік береді: Қазақ хандығының XV-XVIII ғғ. және XIX-XX ғғ. этнографиялық уақытының ескерткіштері. Далалық Сарыарқадағы Қазақ хандығы дәуіріне тиесілі қоныстар әзірше белгісіз. 2021 жылы Ақмола өңірінде XIX ғ. аяғы мен XX ғ. басындағы Қозыкөш кеш ортағасырлық қонысында қазба жұмыстары басталды.

Осы мақаланың мақсаты: Қозыкөш өзеніндегі қазақтардың этнографиялық қонысының жоспарлау-композициялық құрылымына сипаттама беру, қазылған №3 тұрғын үйдің матери-

алдары бойынша XIX ғасырдағы тұрғын үй-шаруашылық кешендерін, сәулетін, құрылыс ісін сипаттау, Қазақстандағы XX ғасырдың басындағы қоғамдық-саяси өзгерістерге байланысты қоныстардың (қыстақтардың) кеңістіктік орналасуы мен жоспарлау бейнесінің өзгеруін көрсету.

Зерттеу материалдары Қозыкөш қонысының №3 мекенінің тұрғын үй-шаруашылық кешенінің археологиялық қазба жұмыстарына негізделген, талдау кезінде қашықтықтан, геофизикалық және тарихи-этнографиялық зерттеу әдістері қолданылған. Қозыкөш қонысындағы қазба жұмыстарының маңыздылығы Қазақ қыстаулары бойынша этнографиялық мәліметтерді растайтын және нақтылайтын материалдарды алудың бірінші ауқымды тәжірибесінен көрінеді. 80-нен астам тұрғын үй-шаруашылық кешені бар бір үлкен ескерткіш шеңберінде стационарлық қазақи тұрғын үйді дамыту мен трансформациялаудың екі кезеңі бөліп көрсетіледі. Біздің қазба жұмыстарымыздың нәтижелері шаруашылық қызметтің көптеген жақтарына, табиғаты пайдаланудың тарихи қалыптасқан қазақи үлгілерінің сипаттамаларына қатысты.

**Кілт сөздер:** Сарыарқа, Қозыкөш, Нұра, қазба жұмыстары, қоныс, тұрғын үй, усадьба, қыстау, шымды кірпіштер.

**\*М. Хабдулина**

*Евразийский национальный университет имени Л.Н. Гумилева,*

*Астана, Республика Казахстан*

*(E-mail: mk\_khabdulina@mail.ru)*

*\*Автор для корреспонденции: mk\_khabdulina@mail.ru*

**С. Шнайдер**

*Институт археологии и этнографии СО РАН, Новосибирск, Российская Федерация*

*(E-mail: sveta.shnayder@gmail.com)*

**А. Егинбай**

*Евразийский национальный университет имени Л.Н. Гумилева,*

*Астана, Республика Казахстан*

*(E-mail: adil\_eginbaev2000@mail.ru)*

**З. Каримбаева**

*Северо-Восточный федеральный университет им. М.К. Аммосова, Якутск, Саха, Российская*

*Федерация*

*(E-mail: zulxumar63@gmail.com)*

### **Казахская усадьба этнографического поселения Козыкош**

**Аннотация.** Проблема изучения оседлой культуры кочевников в последние десятилетия активно разрабатывается различными археологическими коллективами Казахстана. Это новое направление, известное как палеоэтнографическое, получило научное оформление в 70-х годах XX в. К настоящему времени объем накопленного материала позволяет делить стационарные памятники позднесредневековой эпохи на два хронологических периода: памятники периода Казахского ханства XV-XVIII вв. и этнографического времени XIX-XX вв. В степной Сарыарке поселения периода Казахского ханства пока не известны. В 2021 г. в Акмолинском Приишимье начаты раскопки позднесредневекового поселения Козыкош конца XIX – начала XX в.



Цель настоящей статьи: дать характеристику планировочно-композиционной структуры этнографического поселения казахов на реке Козыкош, описать жилищно-хозяйственные комплексы, архитектуру, строительное дело XIX века по материалам раскопанного жилища №3, показать трансформацию пространственного размещения и планировочного облика поселений (кыстаков) в связи с общественно-политическими изменениями начала XX века в Казахстане.

Материалы исследования основаны на археологических раскопках жилищно-хозяйственного комплекса усадьбы №3 поселения Козыкош, при анализе применены дистанционные, геофизические и историко-этнографические методы изучения. Значение раскопок поселения Козыкош заключается в первом масштабном опыте получения материалов, подтверждающих и конкретизирующих этнографические сведения по казахским зимовкам. В рамках одного большого памятника, содержащего более 80-ти жилищно-хозяйственных комплексов, вычлняются два этапа развития и трансформации стационарного казахского жилища. Результаты наших раскопок касаются многих сторон хозяйственной деятельности, характеристики исторически сложившихся моделей казахского природопользования.

**Ключевые слова:** Сарыарка, Козыкош, Нура, раскопки, поселение, жилище, усадьба, кыстау, дерновые кирпичи.

***Information about authors:***

*Khabdulina Maral*, Candidate of historical sciences, Director of the K.A. Akishev Research Institute of Archaeology, L.N. Gumilyov Eurasian National University, K. Satpayev str., 2, Astana, Republic of Kazakhstan.

ORCID: 0000-0002-7195-5723

Scopus ID: 57192665106,

*Shnaider Svetlana*, Candidate of Historical Sciences, Senior Researcher, Institute of Archaeology and Ethnography SB RAS, pr.akad. Lavrentieva, 17, Novosibirsk, Russian Federation.

ORCID:0000-0003-2230-4286

Scopus ID: 56801877800

*Егінбай Адил*, master, researcher at K.A. Akishev Research Institute of Archaeology, L.N. Gumilyov Eurasian National University, K. Satpayev str., 2, Astana, Republic of Kazakhstan.

ORCID:0000-0001-6035-014X

*Karimbaeva Zulxumar*, master of the Department of Anthropology and Ethnology, M.K. Ammosov North-Eastern Federal University, Kulakovskogo, 42, Yakutsk, Saha, Russian Federation.

ORCID: 0000-0003-2893-8423

***Авторлар туралы мәлімет:***

*Хабдулина Марал*, тарих ғылымдарының кандидаты, Қ.А. Ақышев атындағы археология ҒЗИ директоры, Л.Н. Гумилев атындағы Еуразия ұлттық университеті, Қ. Сәтбаев көшесі, 2, Астана, Қазақстан Республикасы.

ORCID: 0000-0002-7195-5723

Scopus ID: 57192665106,

*Шнайдер Светлана*, тарих ғылымдарының кандидаты, РҒА СБ Археология және этнография институтының аға ғылыми қызметкері, Акад. Лаврентьев даңғ., 17, Новосибирск, Ресей Федерациясы.

ORCID: 0000-0003-2230-4286

Scopus ID: 56801877800

*Егінбай Аділ*, магистр, Қ.А. Ақышев атындағы археология ҒЗИ ғылыми қызметкері, Л.Н. Гумилев атындағы Еуразия ұлттық университеті, Қ. Сәтбаев көшесі, 2, Астана, Қазақстан Республикасы.

ORCID: 0000-0001-6035-014X

*Каримбаева Зулхумар*, антропология және этнология кафедрасының магистрі, М.К. Аммосов атындағы Солтүстік-Шығыс федералдық университеті, Кулаковский к., 42, Якутск, Саха, Ресей Федерациясы.

ORCID: 0000-0003-2893-8423

***Сведения об авторах:***

*Хабдулина Марал*, кандидат исторических наук, директор НИИ археологии имени К.А. Акишева, Евразийский национальный университет им. Л.Н. Гумилева, ул. К. Сатпаева, 2, Астана, Республика Казахстан.

ORCID: <https://orcid.org/0000-0002-7195-5723>

Scopus ID: <https://www.scopus.com/authid/detail.uri?authorId=57192665106>

*Шнайдер Светлана*, кандидат исторических наук, старший научный сотрудник отдела археологии, Институт археологии и этнографии СО РАН, проспект Академика Лаврентьева, 17, Новосибирск, Российская Федерация.

ORCID: 0000-0003-2230-4286

Scopus ID: 56801877800

*Егінбай Адиль*, магистр, научный сотрудник НИИ археологии имени К.А. Акишева, Евразийский национальный университет им. Л.Н. Гумилева, ул. К. Сатпаева, 2, Астана, Республика Казахстан.

ORCID: 0000-0001-6035-014X

*Каримбаева Зулхумар*, магистр кафедры антропологии и этнографии, Северо-Восточный федеральный университет имени М.К. Аммосова, ул. Кулаковского, 42, Якутск, Саха, Российская Федерация.

ORCID: 0000-0003-2893-8423